



# FF/FK-180SH

OUTPUT: APPROX 0.5~3.5W

Precious metal/Carbon-brush motors

代表的用途: 电推剪、电动牙刷  
电动剃须刀、航模

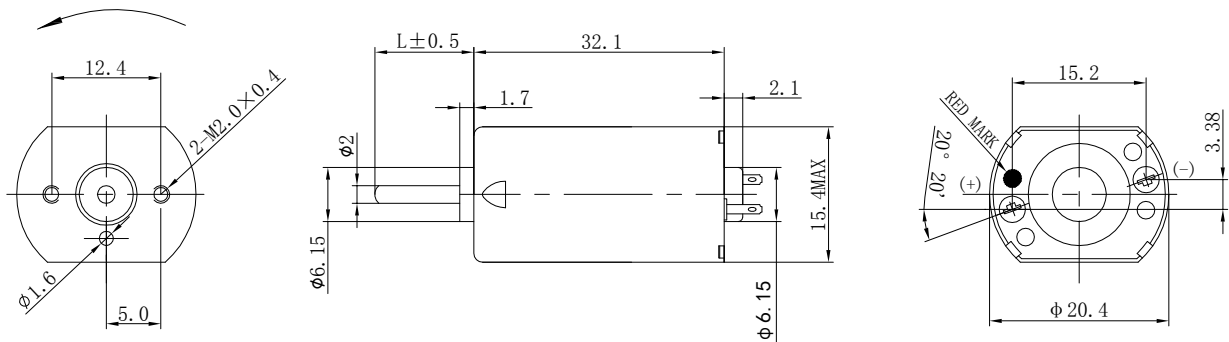
Electric clippers Electric toothbrush  
Electric shaver Model airplane



MODEL	VOLTAGE		NO LOAD		AT MAXIMUM EFFICIENCY				STALL	
	OPERATING RANGE	NOMINAL	SPEED r/min	CURRENT A	SPEED r/min	CURRENT A	TORQUE mN.m	OUTPUT W	TORQUE g.cm	CURRENT A
FF-180SH-2466	2-4V	3.0V	7600	0.106	6431	0.574	1.70	1.14	111	3.1
FF-180SH-10400	20-26V	24.0V	10200	0.025	8557	0.139	2.53	2.23	168	0.768

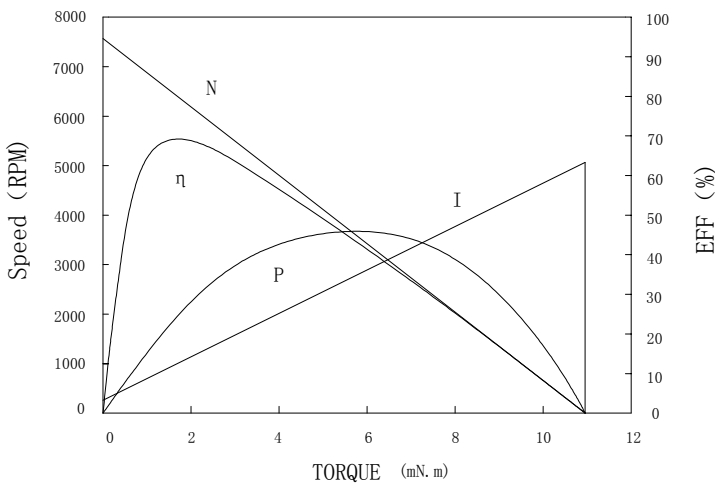
UNIT: MILLIMETERS

旋转方向  
Direction Of Rotation



WEIGHT: 26g (APPROX)

FF-180SH-2466 3.0V



At No Load

Speed: 7619 RPM  
Current: 0.106 AMPS

At stall (Extrapolated)

Torque: 10.93 mN.m  
Current: 3.107 AMPS

At maximum efficiency

Efficiency: 66.5 %  
Torque: 1.704 mN.m  
Speed: 6431 RPM  
Current: 0.574 AMPS  
Output: 1.14 Watts

At maximum Power output

Output: 2.174 Watts  
Torque: 5.466 mN.m  
Speed: 4079 RPM  
Current: 1.50 AMPS

Characteristics

Torque constant  $K_t$ : 3.643 mN.m/APM  
E. M. F. constant  $E_c$ : 3.643 mV/rad/sec  
Dynamic resistance: 0.9656 Ohms  
Motor regulation  $M_r$ : 696.93 RPM/mN.m